

PRELIMINARY DATA SHEET

Quartz DS

KG Quartz DS is extremely fine quartz powder. The colour is off-white and the majority of particles are rough and rounded. This quartz is used in many abrasive processes, as well as a hard filler. Due to its light colour it has got very good light reflective properties.

PROVISIONAL VALUES AND ANALYSIS

Chemical composition:

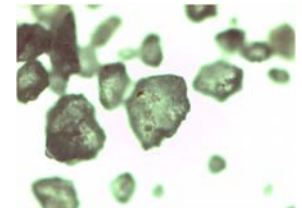
SiO ₂	90,3%
Al ₂ O ₃	4,9%
K ₂ O	1.08%
TiO ₂	0.63%
Fe ₂ O ₃	0.38%

CAS Numbers and description

14808-60-7 Quartz (SiO₂)

Physical analysis:

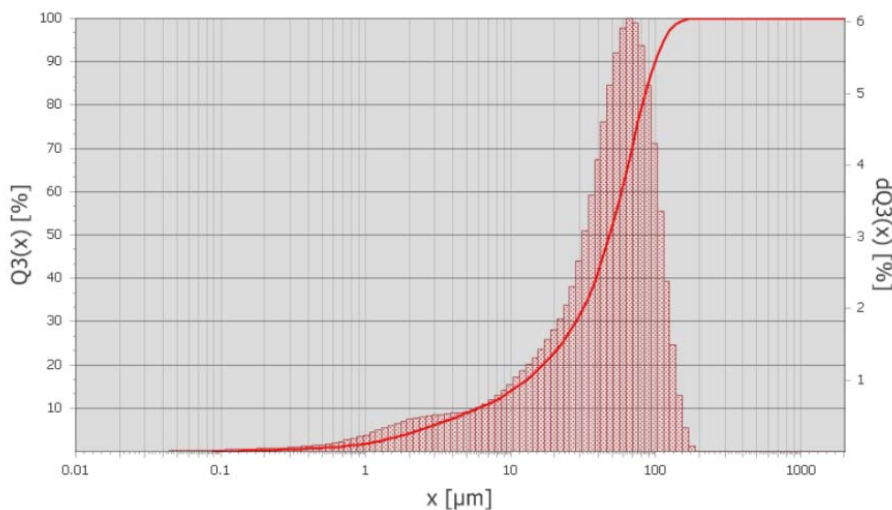
Colour	Off-white
Bulk density	1530kg/m ³
Mean particle size	d50 = 48µm
Loss on Ignition (LOI) @ 1000°C	2.2%
Moisture content	<0.5%



Photo

Microscope x50

Particle size distribution:



Q3(x) [%]	x [µm]
5	2.4
10	6
25	22.4
50	48.3
75	74.3
90	98.9
95	113.5
99	141.4

Updated May 2023

kaolin group (pty) ltd

beautiful life building, 70-72 bree street
cape town, 8001, south africa
plant : 7 louwtjie rothman street
atlantis industria, 7349, south africa

tel +27 (0) 21 424 5958
plant +27 (0) 21 577 2776
fax +27 (0) 86 612 4536
web www.kaolin-group.com

Directors : P Wiese & JR Jansen van Rensburg
reg no. 2007/014039/07
vat no. 4300166040